



Segmentation of Breast Tissue Lesions Using Explainable Models

Emlőszöveti elváltozások szegmentálása magyarázható
modellekkel

Adél Bajcsi, Ditmár Máté and Lehel Csató

Babeș-Bolyai University, Cluj-Napoca
Faculty of Mathematics and Computer Science

2025

Outline

Introduction

Dataset

Segmentation

Conclusions and Future Work





Introduction

Introduction

Dataset

Segmentation

Conclusions
and Future
Work

- ▶ Breast cancer is the most common cancer diagnosed in women
- ▶ Early detection through imaging (e.g., mammography) significantly improves outcomes
- ▶ Mammography is the most frequently used imaging technique to record the breast tissue



Introduction

Introduction

Dataset

Segmentation

Conclusions
and Future
Work

- ▶ Breast cancer is the most common cancer diagnosed in women
- ▶ Early detection through imaging (e.g., mammography) significantly improves outcomes
- ▶ Mammography is the most frequently used imaging technique to record the breast tissue



Introduction

Introduction

Dataset

Segmentation

Conclusions
and Future
Work

- ▶ Breast cancer is the most common cancer diagnosed in women
- ▶ Early detection through imaging (e.g., mammography) significantly improves outcomes
- ▶ Mammography is the most frequently used imaging technique to record the breast tissue



Datasets

Introduction

Dataset

RABMC

Segmentation

Conclusions
and Future
Work

- ▶ Tissue density has high impact on the lesion detection performance
- ▶ However, not all datasets include this information
- ▶ There is a growing demand for multi-modal computer-aided diagnosis systems



Datasets

Introduction

Dataset

RABMC

Segmentation

Conclusions
and Future
Work

- ▶ Tissue density has high impact on the lesion detection performance
- ▶ However, not all datasets include this information
- ▶ There is a growing demand for multi-modal computer-aided diagnosis systems



Datasets

Introduction

Dataset

RABMC

Segmentation

Conclusions
and Future
Work

- ▶ Tissue density has high impact on the lesion detection performance
- ▶ However, not all datasets include this information
- ▶ There is a growing demand for multi-modal computer-aided diagnosis systems



RABMC – Romanian Adipose Breast Mammogram Collection

Introduction

Dataset

RABMC

Segmentation

Conclusions
and Future
Work

- ▶ The dataset is collected in collaboration with “Prof. Dr. Ion Chiricuță” Oncology Institute
- ▶ Contains:
 - ▶ Mammograms
 - ▶ Tomosynthesis
 - ▶ Histopathology
 - ▶ Reports from the doctors



RABMC – Romanian Adipose Breast Mammogram Collection

Introduction

Dataset

RABMC

Segmentation

Conclusions
and Future
Work

- ▶ The dataset is collected in collaboration with “Prof. Dr. Ion Chiricuță” Oncology Institute
- ▶ Contains:
 - ▶ Mammograms
 - ▶ Tomosynthesis
 - ▶ Histopathology
 - ▶ Reports from the doctors



RABMC – Romanian Adipose Breast Mammogram Collection

Introduction

Dataset

RABMC

Segmentation

Conclusions
and Future
Work

- ▶ The dataset is collected in collaboration with “Prof. Dr. Ion Chiricuță” Oncology Institute
- ▶ Contains:
 - ▶ Mammograms
 - ▶ Tomosynthesis
 - ▶ Histopathology
 - ▶ Reports from the doctors



RABMC – Romanian Adipose Breast Mammogram Collection

Introduction

Dataset

RABMC

Segmentation

Conclusions
and Future
Work

- ▶ The dataset is collected in collaboration with “Prof. Dr. Ion Chiricuță” Oncology Institute
- ▶ Contains:
 - ▶ Mammograms
 - ▶ Tomosynthesis
 - ▶ Histopathology
 - ▶ Reports from the doctors



RABMC – Romanian Adipose Breast Mammogram Collection

Introduction

Dataset

RABMC

Segmentation

Conclusions
and Future
Work

- ▶ The dataset is collected in collaboration with “Prof. Dr. Ion Chiricuță” Oncology Institute
- ▶ Contains:
 - ▶ Mammograms
 - ▶ Tomosynthesis
 - ▶ Histopathology
 - ▶ Reports from the doctors



Metadata

Introduction

Dataset

RABMC

Segmentation

Conclusions
and Future
Work

- ▶ The type of the tissue
- ▶ Presence of a lesion
- ▶ Type of the lesion
- ▶ Location of the lesion
- ▶ The original reports
- ▶ An English version of the report (translated with ChatGPT)



Metadata

Introduction

Dataset

RABMC

Segmentation

Conclusions
and Future
Work

- ▶ The type of the tissue
- ▶ Presence of a lesion
 - ▶ Type of the lesion
 - ▶ Location of the lesion
 - ▶ The original reports
 - ▶ An English version of the report (translated with ChatGPT)



Metadata

Introduction

Dataset

RABMC

Segmentation

Conclusions
and Future
Work

- ▶ The type of the tissue
- ▶ Presence of a lesion
- ▶ Type of the lesion
- ▶ Location of the lesion
- ▶ The original reports
- ▶ An English version of the report (translated with ChatGPT)



Metadata

Introduction

Dataset

RABMC

Segmentation

Conclusions
and Future
Work

- ▶ The type of the tissue
- ▶ Presence of a lesion
- ▶ Type of the lesion
- ▶ Location of the lesion
- ▶ The original reports
- ▶ An English version of the report (translated with ChatGPT)



Metadata

Introduction

Dataset

RABMC

Segmentation

Conclusions
and Future
Work

- ▶ The type of the tissue
- ▶ Presence of a lesion
- ▶ Type of the lesion
- ▶ Location of the lesion
- ▶ The original reports
- ▶ An English version of the report (translated with ChatGPT)



Metadata

Introduction

Dataset

RABMC

Segmentation

Conclusions
and Future
Work

- ▶ The type of the tissue
- ▶ Presence of a lesion
- ▶ Type of the lesion
- ▶ Location of the lesion
- ▶ The original reports
- ▶ An English version of the report (translated with ChatGPT)



Distribution of the data

Introduction

Dataset

RABMC

Segmentation

Conclusions
and Future
Work

- ▶ 289 patients:
 - ▶ 167 heterogeneous
 - ▶ 131 homogeneous
- ▶ 187 healthy scans, lesions: 195 benign and 254 malignant
- ▶ Age between 32 and 90



Distribution of the data

Introduction

Dataset

RABMC

Segmentation

Conclusions
and Future
Work

- ▶ 289 patients:
 - ▶ 167 heterogeneous
 - ▶ 131 homogeneous
- ▶ 187 healthy scans, lesions: 195 benign and 254 malignant
- ▶ Age between 32 and 90



Distribution of the data

Introduction

Dataset

RABMC

Segmentation

Conclusions
and Future
Work

- ▶ 289 patients:
 - ▶ 167 heterogeneous
 - ▶ 131 homogeneous
- ▶ 187 healthy scans, lesions: 195 benign and 254 malignant
- ▶ Age between 32 and 90



Distribution of the data

Introduction

Dataset

RABMC

Segmentation

Conclusions
and Future
Work

- ▶ 289 patients:
 - ▶ 167 heterogeneous
 - ▶ 131 homogeneous
- ▶ 187 healthy scans, lesions: 195 benign and 254 malignant
- ▶ Age between 32 and 90



Distribution of the data

Introduction

Dataset

RABMC

Segmentation

Conclusions
and Future
Work

- ▶ 289 patients:
 - ▶ 167 heterogeneous
 - ▶ 131 homogeneous
- ▶ 187 healthy scans, lesions: 195 benign and 254 malignant
- ▶ Age between 32 and 90



Anonymization

Introduction

Dataset

RABMC

Segmentation

Conclusions
and Future
Work

- ▶ Ensuring compliance with privacy and clinical data standards
- ▶ All personal identifiers are removed from medical images and metadata
- ▶ Conversion and standardization of imaging formats



Anonymization

Introduction

Dataset

RABMC

Segmentation

Conclusions
and Future
Work

- ▶ Ensuring compliance with privacy and clinical data standards
- ▶ All personal identifiers are removed from medical images and metadata
- ▶ Conversion and standardization of imaging formats



Anonymization

Introduction

Dataset

RABMC

Segmentation

Conclusions
and Future
Work

- ▶ Ensuring compliance with privacy and clinical data standards
- ▶ All personal identifiers are removed from medical images and metadata
- ▶ Conversion and standardization of imaging formats

Extracting manual segmentation

Introduction

Dataset

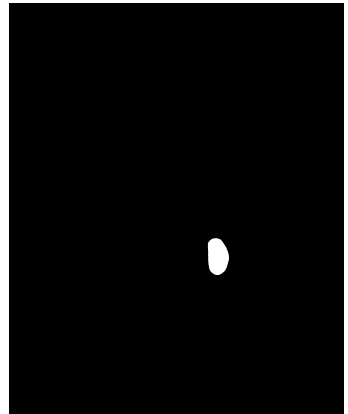
RABMC

Segmentation

Conclusions
and Future
Work



(a) Manual segmentation



(b) Extracted lesion mask



Segmentation of Breast Tissue

Introduction

Dataset

Segmentation

Conclusions
and Future
Work

- ▶ **Objective:** Distinguish lesion regions (foreground) from healthy breast tissue (background)
- ▶ Enhances the performance and reliability of automated breast cancer detection systems
⇒ we propose the use of a convolutional neural network



Segmentation of Breast Tissue

Introduction

Dataset

Segmentation

Conclusions
and Future
Work

- ▶ **Objective:** Distinguish lesion regions (foreground) from healthy breast tissue (background)
- ▶ Enhances the performance and reliability of automated breast cancer detection systems
⇒ we propose the use of a convolutional neural network

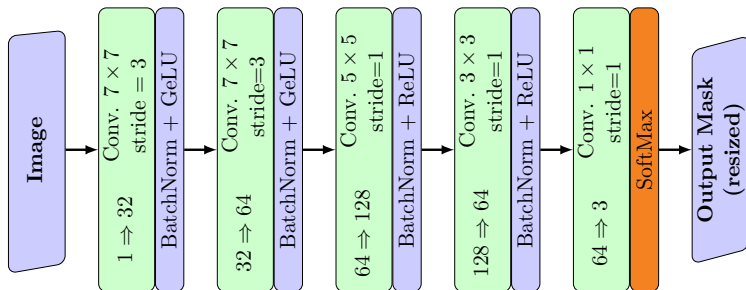
Lightweight Segmentation Model

Introduction

Dataset

Segmentation

Conclusions
and Future
Work



Ditmár Máté and Lehel Csató. "Salivary ferning segmentation with a lightweight CNN"
(2025) 2025 27th International Symposium on Symbolic and Numeric Algorithms for Scientific Computing (SYNASC)



Lightweight Segmentation Model

Receptive field

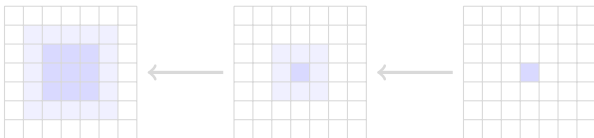
Introduction

Dataset

Segmentation

Conclusions
and Future
Work

- ▶ The region of the input space that contributes to a neuron's activation
- ▶ In convolutional networks, this receptive field expands progressively with each added layer
- ▶ Visualization of the receptive field produced by two consecutive convolutional layers using 3×3 kernels with a stride of 1





Lightweight Segmentation Model

Receptive field

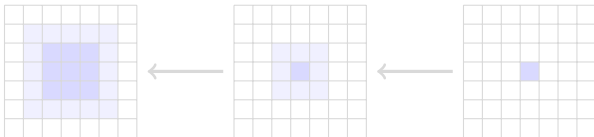
Introduction

Dataset

Segmentation

Conclusions
and Future
Work

- ▶ The region of the input space that contributes to a neuron's activation
- ▶ In convolutional networks, this receptive field expands progressively with each added layer
- ▶ Visualization of the receptive field produced by two consecutive convolutional layers using 3×3 kernels with a stride of 1





Lightweight Segmentation Model

Receptive field

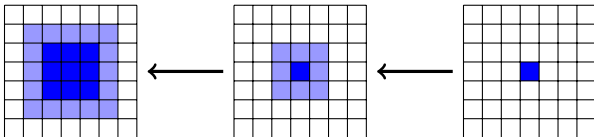
Introduction

Dataset

Segmentation

Conclusions
and Future
Work

- ▶ The region of the input space that contributes to a neuron's activation
- ▶ In convolutional networks, this receptive field expands progressively with each added layer
- ▶ Visualization of the receptive field produced by two consecutive convolutional layers using 3×3 kernels with a stride of 1





Lightweight Segmentation Model

Results

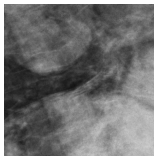
Introduction

Dataset

Segmentation

Conclusions
and Future
Work

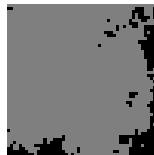
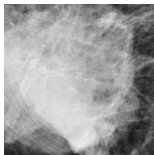
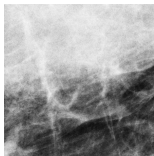
patch



ground truth



prediction





Conclusions and Future Work

Introduction

Dataset

Segmentation

Conclusions
and Future
Work

- ▶ The manual segmentation must be revised
- ▶ The preliminary results of the lightweight CNN model are promising
- ▶ Fine-tuning the proposed lightweight model
- ▶ Training more complex self-explanatory models like ProtoSeg
- ▶ Training a multi-modal system, considering the histopathological reports



Conclusions and Future Work

Introduction

Dataset

Segmentation

Conclusions
and Future
Work

- ▶ The manual segmentation must be revised
- ▶ The preliminary results of the lightweight CNN model are promising
- ▶ Fine-tuning the proposed lightweight model
- ▶ Training more complex self-explanatory models like ProtoSeg
- ▶ Training a multi-modal system, considering the histopathological reports



Conclusions and Future Work

Introduction

Dataset

Segmentation

Conclusions
and Future
Work

- ▶ The manual segmentation must be revised
- ▶ The preliminary results of the lightweight CNN model are promising
- ▶ Fine-tuning the proposed lightweight model
- ▶ Training more complex self-explanatory models like ProtoSeg
- ▶ Training a multi-modal system, considering the histopathological reports



Conclusions and Future Work

Introduction

Dataset

Segmentation

Conclusions
and Future
Work

- ▶ The manual segmentation must be revised
- ▶ The preliminary results of the lightweight CNN model are promising
- ▶ Fine-tuning the proposed lightweight model
- ▶ Training more complex self-explanatory models like ProtoSeg
- ▶ Training a multi-modal system, considering the histopathological reports



Conclusions and Future Work

Introduction

Dataset

Segmentation

Conclusions
and Future
Work

- ▶ The manual segmentation must be revised
- ▶ The preliminary results of the lightweight CNN model are promising
- ▶ Fine-tuning the proposed lightweight model
- ▶ Training more complex self-explanatory models like ProtoSeg
- ▶ Training a multi-modal system, considering the histopathological reports



Introduction

Dataset

Segmentation

Conclusions
and Future
Work

- [1] Máté, D. & Csató, L. (2025) Salivary ferning segmentation with a lightweight CNN, International Symposium on Symbolic and Numeric Algorithms for Scientific Computing (Accepted)
- [2] Sacha, M., Rymarczyk, D., Struski, Ł., Tabor, J., & Zieliński, B. (2023). ProtoSeg: Interpretable Semantic Segmentation with Prototypical Parts (Version 2). arXiv. <https://doi.org/10.48550/ARXIV.2301.12276>